

# GRACE VASO GR006BI

CE EN 997:2015

# GLOBO



Scarico ottimizzato a 4/2,6 litri  
Drain 4/2,6 lt

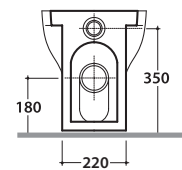
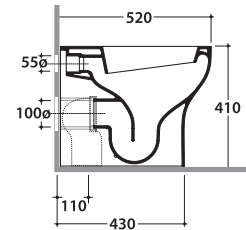
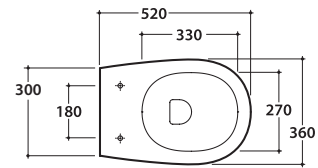
Cod. **GR006BI**

Vaso a terra 52.36 h41 cm. Scarico 4 / 2,6 Lt. Installazione filo parete.

Completo di fissaggi. Peso 28 Kg

Floor mounted Wc 52.36 h43 cm. Drain 4 / 2,6 Lt. Back to wall installation.

Fixing kit included. Weight 28 Kg



Coprivaso con sistema di cerniere a sgancio rapido  
Seat-cover with hinge system to quick release



Trattamento antibatterico per sedili in versione bianco lucido  
Antibacterial treatment on toilet seats in shiny white

Cod. **GR021BI**

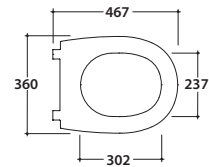
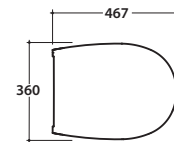
Coprivaso rimovibile in duroplast con chiusura tradizionale. Peso 2 Kg

Removable duroplast seat-cover with traditional closing system. Weight 2 Kg

Cod. **GR022BI**

Coprivaso rimovibile in duroplast con chiusura rallentata. Peso 2 Kg

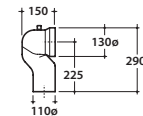
Removable duroplast seat-cover with soft-closing system. Weight 2 Kg



Cod. **VA079**

Curva tecnica per lo scarico a pavimento. Peso 0,3Kg

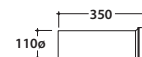
Elbow pipe for floor drain. Weight 0,3 Kg



Cod. **VA076**

Raccordo per scarico a parete cm. 35

Pipe for wall drain 35cm



Cod. **VA132**

Riduttore flusso di scarico.

Flow reductor.