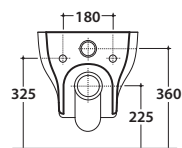
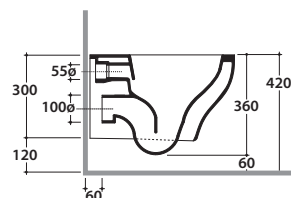
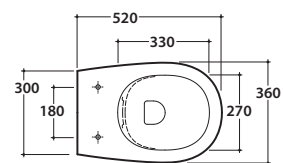


GRACE VASO SOSPESO SENZABRIDA® GRS03BI

CE EN 997:2019

GLOBO



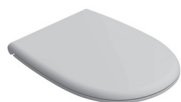
Scarico ottimizzato a 4/2,6 litri
Drain 4/2,6 lt



SENZABRIDA®

Cod. **GRS03BI**

Vaso sospeso SENZABRIDA 52.36 h36 cm. Scarico 4 / 2,6 Lt. Fissaggi inclusi. Peso 25 Kg
Wall-hung Wc No Rim 52.36 h36 cm. Drain 4 / 2,6 Lt. Fixing kit included. Weight 25 Kg



Coprivaso con sistema di cerniere a
sgancio rapido.
Seat-cover with hinge system to
quick release



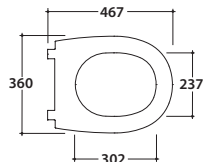
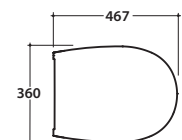
Trattamento antibatterico per sedili in
versione bianco lucido.
Antibacterial treatment on toilet seats
in shiny white

Cod. **GR021BI**

Coprivaso rimovibile in duroplast con chiusura tradizionale. Peso 2 Kg
Removable duroplast seat-cover with traditional closing system. Weight 2 Kg

Cod. **GR022BI**

Coprivaso rimovibile in duroplast con chiusura rallentata. Peso 2 Kg
Removable duroplast seat-cover with soft-closing system. Weight 2 Kg



Cod. **VA132**

Riduttore flusso di scarico.
Flow reductor.



Cod. **PU001**

Protezione antiurto e acustica.
Acoustic and crash protection.



Cod. **FI002**

Staffa di fissaggio a "L". Peso 2,5 Kg
Fixing brackets for W/H sanitary. Weight 2,5 Kg